

## Riverguide 2.0 Quick Start Guide – Staff

PEARL RIVER

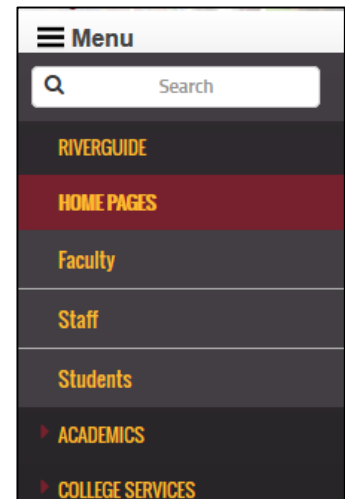
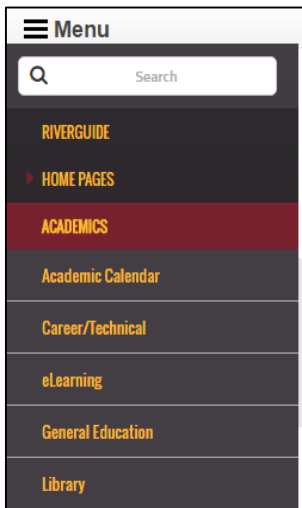
Sign in to your account

User Name Password Sign In

Stay Signed In [Forgot your password?](#)

Enter PRCC credentials (same user credentials as previous Riverguide log on).

*Example:* User name: jsample Password: Password1



Use the Menu button to navigate to various Information Sites or New Icon Bar to open different applications using Single Sign On (Canvas, Wildcat Web, INB Banner). *Note: Lynx still requires login.*

Employee Email

**!** You do not have any credentials for Exchange Email. Try entering your credentials.

You do not have any email connections that provide unread messages.

Name	Value
User Name	<input type="text"/>
Password	<input type="password"/>
Confirm Password	<input type="password"/>

OK Cancel

Employee Email

▼ You Have 9 Unread Messages

9 Exchange Email

Click the Email icon or Google Apps to navigate your student email. Note: First time users, may have to enter email credentials to sync up account.

**My Bookmarks**

CAMPUS LINKS

- Directory
- IT Work Order
- Lynx
- Physical Plant Work Order
- PRCC Web Site

MY LINKS

There are no links to display yet.

[Manage Bookmarks](#) ▾

**FAQ**

**Question - How much is a school ID? (1)**

School ID's are free but there is a replacement ID of 15.00.

Use My Bookmarks to navigate to the PRCC Directory, Enter a Work Order, and Update Emergency Notification Contact Information (Lynx). FAQ is Frequently Asked Questions and to view an answer to a question you must click the + on the left side of the question.

**Campus Announcements** | Campus Events | Campus News

SEP 20  
10:41 AM

Intramural Dodgeball  
*Morgan Smith*

**Campus Announcements** | Campus Events | Campus News

NOV 10  
5:30 PM

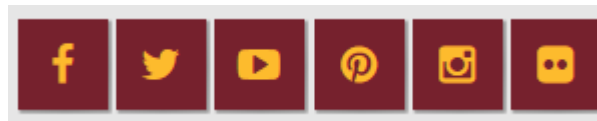
[PRCC vs. Spring Hill JV \(Basketball-Women Only\)](#)  
*Poplarville Campus*

**Campus Announcements** | Campus Events | **Campus News**

▼ PRESS RELEASE

- Mu Alpha Theta inducts new members 3 hours ago
- Wildcats pull away in second half to defeat Delgado 5 days ago
- Lady Wildcats improve to 2-0 with victory over Delgado 5 days ago
- Total of 115 PRCC students receive 2016 PRVEPA Round Up for Education scholarships 5 days ago
- Tickets for Marty Stuart show on sale 5 days ago

Click on any of the 3 Campus tabs (Campus Announcements, Campus Events, Campus News) to see the latest campus announcements or press releases.

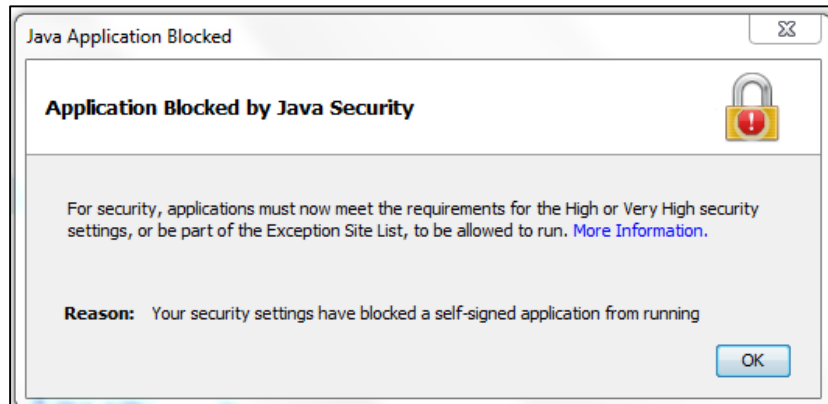


Click any of the above Social Media Icons to navigate to that platform.

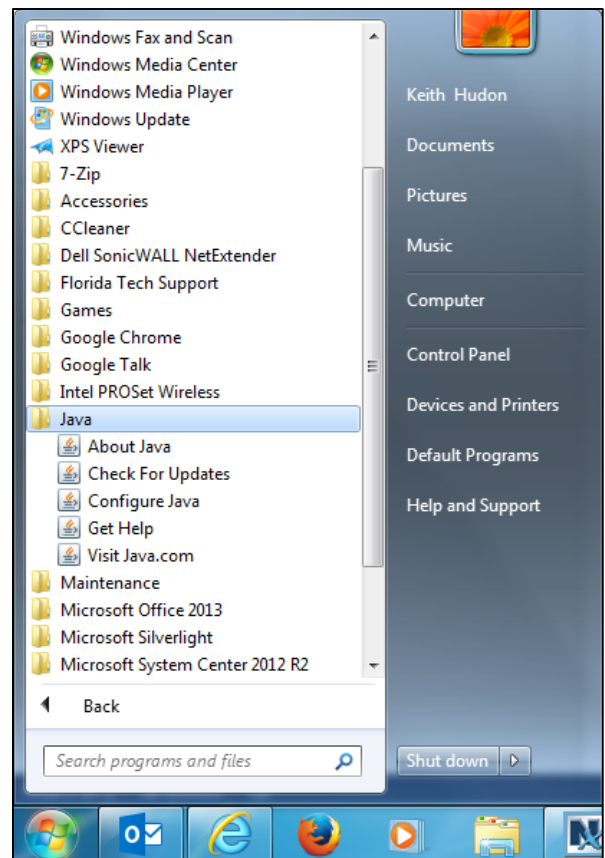
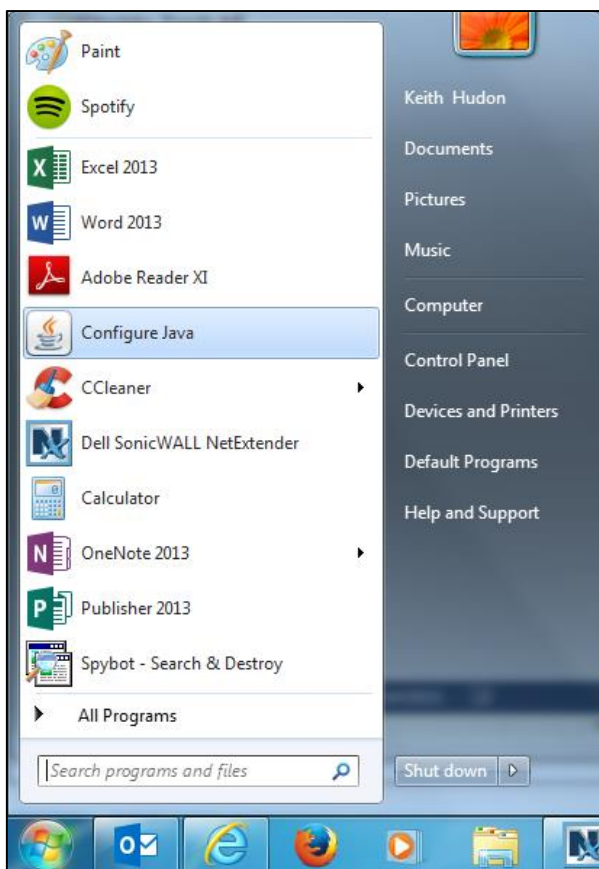
## Riverguide 2.0 Quick Start Guide – Staff

### How to Add Site Exception

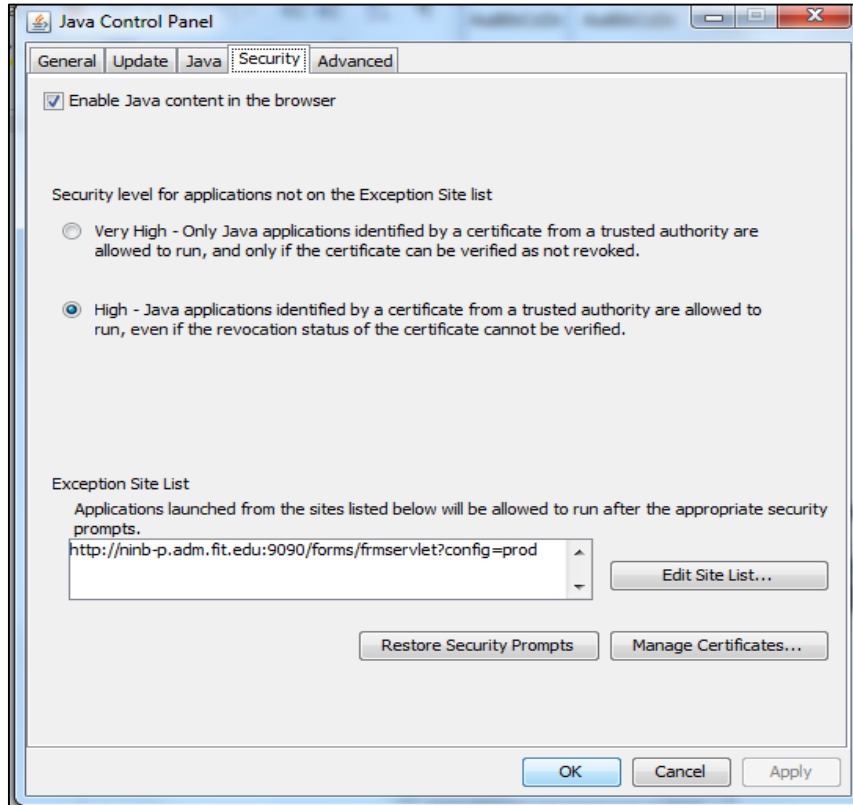
*Note: Banner may also appear with a blank screen with a little X box.*



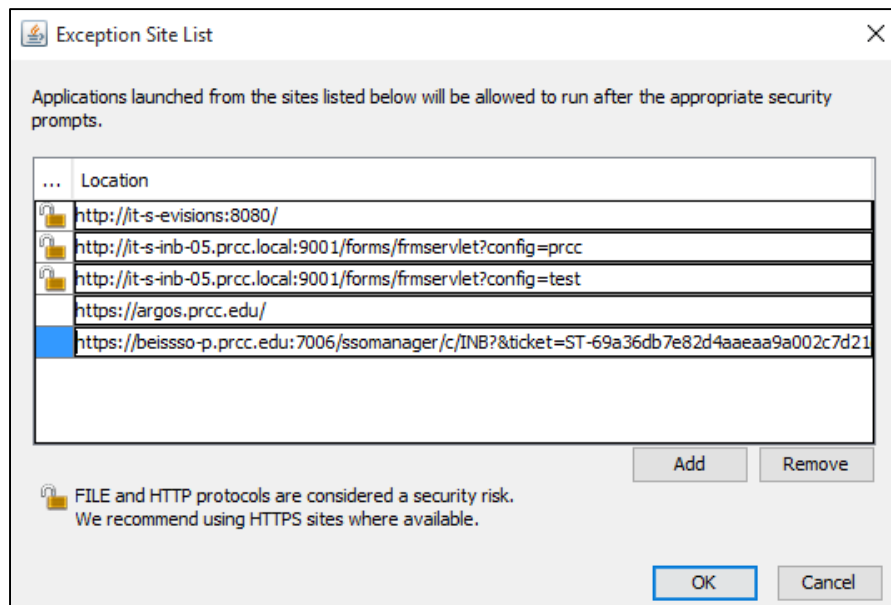
Step 1: Find Configure Java in your start menu and click on it (might be in the Java folder).



Step 2: Click on the Security Tab in the Control Panel. On the bottom right of the Security tab you want to click on Edit Site List...



Step 3: Click add and enter = <https://beisso-p.prcc.edu:7006/ssomanager/c/INB?&ticket=ST-69a36db7e82d4aaea9a002c7d21d62d-eis-p.prcc.edu>

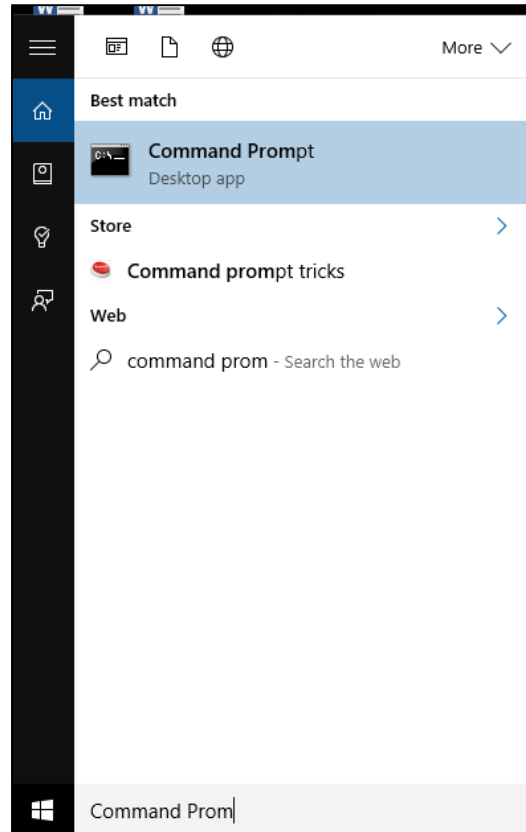


Step 4: Click OK and restart your browser.

## Riverguide 2.0 Quick Start Guide – Staff

### How to Flush DNS (for page not found)

Step 1: Type Command Prompt in your start menu and click on it.



Step 2: Type: ipconfig /flushdns then hit Enter.

```
Command Prompt
Microsoft Windows [Version 10.0.10240]
(c) 2015 Microsoft Corporation. All rights reserved.

C:\Users\tnoel>ipconfig /flushdns

Windows IP Configuration

Successfully flushed the DNS Resolver Cache.

C:\Users\tnoel>
```

Step 3: Click X to exit.