

# Table of Contents

## Equipment:

Compu-Lenz	2
Easy Cassette Player	4
Tape Talker Cassette Player w/ variable speeds	3
48" Adjustable Height Workstation	4
36" Adjustable Height Workstation	4
Headphones	5

## Software:

Open Book Ruby	6
JAWS (screen reader)	7
Dragon Dictate™ (known as Dragnet)	8
Zoom-Text	9-10

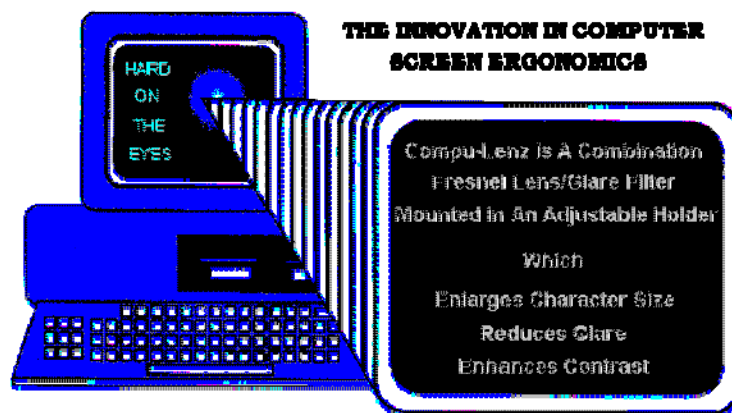
## Audio Cassettes & CD-ROMS

Composition I and II	11
Literature	11

## Additional Information

Additional Information	12-15
------------------------	-------

# Compu-Lenz



**Compu-Lenz is easy on the eyes. Safely view your computer screen, help preserve normal eyesight and accommodate certain low vision disabilities. This aid allows the user to adjust the amount of magnification desired, up to a maximum of two times. Compu-Lenz is comprised of a fresnel lens and a glass glare filter mounted in an adjustable holder. The Compu-Lenz increases character size through a high-powered Fresnel lens. This is a clear lens that faces the monitor. This precision etched diamond cut lens totally eliminates any distortion or light refraction giving the user an image of unequalled clarity. This lens is like a giant magnifying lens. The result is a picture perfect reproduction designed to enhance readability, character recognition, accuracy, and productivity.**

## Tape Talker Cassette Player with Variable Speeds



**Tape Talker is a 2 speed stereo cassette player modified to play 4 track tapes at 15/16 IPS and 2 track cassettes at normal speed (1 7/8 IPS). This is from the Library of Congress for the blind.**

## Easy Cassette Player

The Easy Cassette Player is from the Mississippi Library Commission for the blind. The Easy Cassette Player is designed for people who are not able to manage the controls of the standard cassette player. It plays through all four sides of a talking book without the reader removing the cassette and turning it over. Readers may stop the tape at any time and later resume where they left off. However, if the tape is removed and then reinserted, it will rewind automatically to the beginning. The Easy Machine only plays talking book tapes (4 track, 15/16 i.p.s.).

## Adjustable Height Workstation

This workstation is height adjustable and allows for easy individual positioning. This table meets all ADA regulations that are necessary for patrons with disabilities.



# Headphones & Multimedia Listening Centers

**The Lab has headphones and group listening centers available for students. The headphones offer quality sound and reproduce voice with accuracy. The multimedia listening centers work with any tape recorder, record player, computer or other audio program source. The multimedia listening provides each listener with individual volume control.**



# Software

## Open Book: The Ruby Edition

**OPEN BOOK** is a Software program that turns the PC, scanner, and sound card into a full-featured reading machine. You can scan a page on a flatbed scanner, and **OPEN BOOK** will read that page aloud for you. Or, you can open and read a text or word-processing file. **OPEN BOOK** allows you to alter the way the page is read aloud. If you have low vision, you can modify the screen layout. In addition, **OPEN BOOK** includes the editing features of a dictionary, thesaurus, and spell checker. **OPEN BOOK** includes many special features designed for low vision users. Some of the features are listed below:

**Exact View:** Allows the user to scan and display a page on the screen exactly as it is in the original document, including graphics, columns, and other elements that affect how the page looks.

**Zoom:** Allows the user to change the display of the scanned page from 25% Of normal size to 500% of normal size.

**Color Combinations:** Allows the user to select text and background color combinations to make it easier to see the text on the screen.

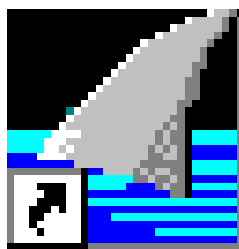
**Visual Settings:** Allows the user to control the font type and size, text, background, and cursor colors, the margin size, and spacing between characters, work, lines and sentences--all to make the page more readable.

Also, the Manual is available in Braille and includes IBM's ViaVoice Outloud Speech software.

## Software

# JAWS (Screen Reader)

**This assistive technology software program includes full range screen reading and screen magnification software for the blind and visually impaired. With the use of this product, computer users with visual impairments can access a world of information through the web; in addition, the user can read and write e-mail messages. This program also allows for re-calculating spreadsheets or accessing information in a database. JAWS also supports Microsoft Active Accessibility, works in MS-DOS window, has hot, screen sensitive, and keyboard help modes, provides customization utility managers and keyboard managers, provides graphic labelers, provides dictionary and configuration managers, supports refreshable Braille displays, and comes with a cassette tape tutorial. Also this product provides the user with a Braille instruction manual.**



JAWS.Ink

# Software

## Dragon Naturally Speaking Professional

**DRAGON NATURALLY SPEAKING** lets you talk to your computer instead of typing. As you talk, the program transcribes your words onto the screen and into your documents or e-mails. This program dictates into Microsoft Word, Corel, WordPerfect, personal information organizers, and virtually any other program in which you normally type.

**DRAGON NATUALLY SPEAKING** is good for:

- \*Composing letters, memos, and e-mail messages
- \*Writing a report, article, or story.
- \*Brainstorming out loud to capture your thoughts
- \*Editing work by voice or mouse keyboard.

You can use simple voice commands to revise and format text, move around your document, and control your computer. **DRAGON NATURALLY SPEAKING** is not just for typing. You can use your voice to start programs, open menus, and click buttons. If you use Internet Explorer to browse the Web, you can use **DRAGON NATURALLY SPEAKING** to follow links and go to favorite sites by voice.



NaturallySpeaking Professional.Ink

# **Software**

## **ZoomText Extra Level 2**

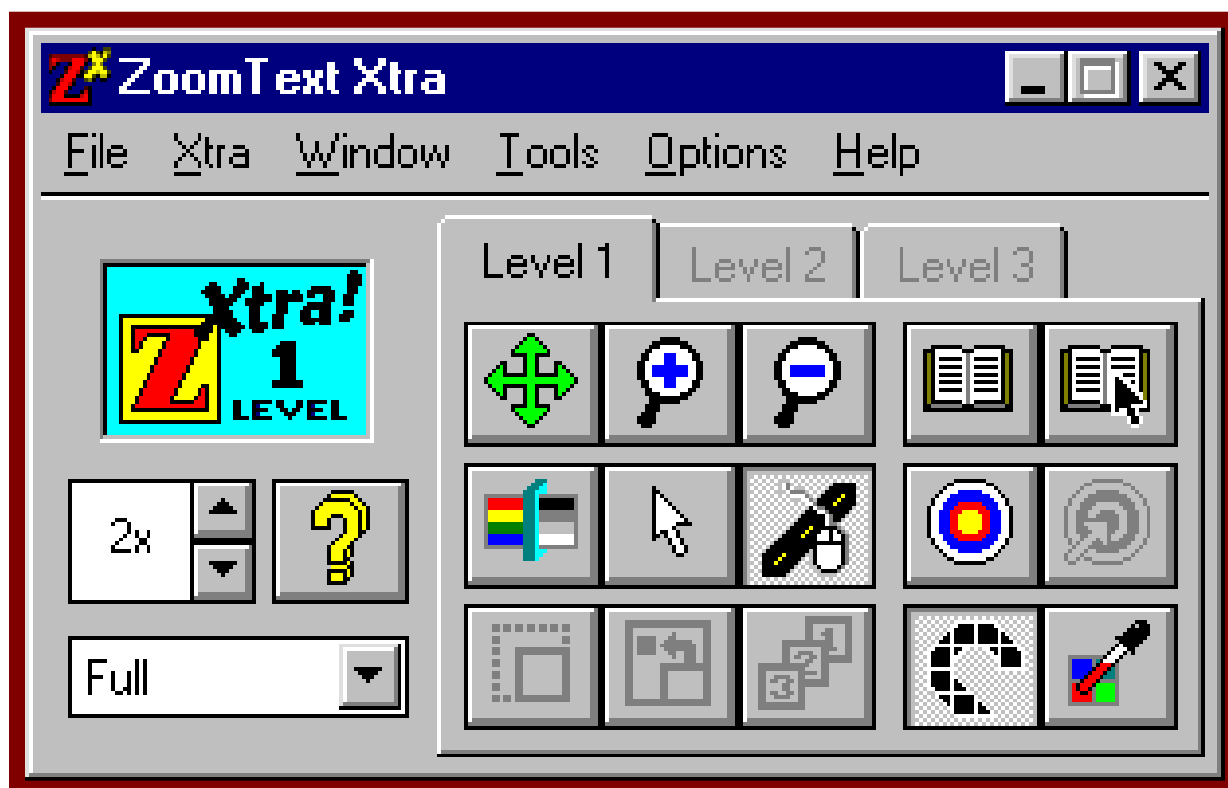
**ZOOMTEXT EXTRA LEVEL 2** is an adaptive software program that integrates magnification, screen reading and scanning with OCR to provide complete access to Microsoft Windows applications and printed documents. In this program, your Windows programs are enlarged and spoken to you, as you do your work. Level 2 includes the following features:

- \*Fully synchronized magnification and screen reading
- \*Built in text-to-speech software supports all Windows 95 sound cards
- \*Speaks all essential Windows components, including menus, controls, messages and titles
- \*Reads characters, words or lines of text by simply moving the caret
- \*Echoes keyboard typing by character and/or word
- \*Speech settings for adjusting voice, rate, pitch and volume
- \*Verbosity settings for controlling the amount of speech feedback
- \*Speak-It tool speaks on-screen text using mouse point-and click
- \*Supports all SSIL synthesizers and SoundBlasters with TextAssist.

In addition, Level 2 includes all Level 1 features.

- \*Magnification levels from 2x to 16x
- \*Specialized zoom windows
- \*Cursor size and color enhancements make finding the cursor a snap
- \*Filter screen colors with contrast, gray-scale and inversion settings
- \*Works with all screen resolutions in HighColor.

## Example of ZoomText



## Audio Cassettes & CD-ROMS

Numerous cassettes are available in the Learning Lab. The cassettes cover a variety of genres in literature and provide criticisms on a variety of the works. In addition, the cassettes focus on a variety of literary elements that include imagery, figurative language, character, plot, setting and interpretation. The Lab has available on CD-Rom the following:

**A Tale of Two Cities by Charles Dickens**

**Wuthering Heights by Emily Bronte**

**The Great Gatsby by F. Scott Fitzgerald**

**Their Eyes Were Watching God by Nora Neale Hurston**

**The Fellowship of the Ring by J.R.R. Tolkien**

**The Two Towers by J.R.R. Tolkien**

**The Return of the King by J.R.R. Tolkien**

**The Annals of the Kings and Rulers by J.R.R. Tolkien**



# Student Information

## **OVERVIEW:**

**The Learning Lab functions as an instructional support service at Pearl River community college for all students. The Learning Lab provides computer-assisted instruction that supplements course content in the Academic, Technical and Vocational programs. Video and audio materials are also available in the Lab to supplement courses. The Learning Lab provides word processing programs for those students who want to type essays, short stories, research papers, and other required assignments on the computer. Please visit our Learning Resource Center website for additional Learning Lab resource information (<http://www.prec.cc.ms.us/lrc/learninglab/index.html>).**

# Learning Lab Hours

## Fall /Spring Learning Lab Hours:

<b>Monday-Thursday</b>	<b>7:45 AM-9:00 PM</b>
<b>Friday</b>	<b>7:45 AM-3:00 PM</b>

## Summer Learning Lab Hours:

<b>Monday, Tuesday, &amp; Wednesday</b>	<b>7:45 AM-6:30 PM</b>
<b>Thursday</b>	<b>7:45 AM-5:00 PM</b>
<b>Friday</b>	<b>Closed</b>

**Note: Students needing to use the Learning Lab's voice activated software will need to schedule an appointment with Tonia Moody. The process of programming your voice in this program will take approximately two hours. For more information, call 403-1060.**

## **Additional Information**

### **DEFINITIONS:**

#### **Assistive Technology:**

**Assistive technology is the development and provision of devices and services that help circumvent the effects of disabilities. Assistive technology helps maintain or improve the functional capabilities of a person with a disability. Assistive technology ranges in low-technology solutions to high-technology solutions. An example of a low-technology solution is large print for the visually impaired. An Example of a high-technology solution is voice-activated software.**

#### **Disability:**

**Under the Rehabilitation Act of 1973, Section 504, a person with a disability is anyone with a physical or mental impairment that substantially impairs or restricts one or more of the major life activities, such as: walking, seeing, speaking, breathing, hearing, working, learning, caring for oneself, and performing manual tasks.**

#### **Additional Services:**

##### **Student Support Services**

**Director: Dr. Robert Escudero  
601-403-1265**

##### **ADA Coordinator's Office**

**ADA/Civil Rights Coordinator: Tonia Moody  
601-403-1060**

**If a student has a disability that qualifies under the Americans Disability Act and requires accommodations, he/she should contact the ADA Coordinator's office at 601-403-1060 for information on appropriate policies and procedures.**

**Pearl River Community College offers equal education and employment opportunities. We do not discriminate on the basis of race, religion, color, sex, age, national origin, veteran status, or disability.**